





TO: P-12 Education Committee

FROM: Allison Armour-Garb 

SUBJECT: Revision Recommendation for a Charter School Authorized by the New York City Department of Education Chancellor

DATE: April 29, 2021

AUTHORIZATION(S): 

SUMMARY

Issue for Decision

Should the Board of Regents approve the proposed revision for the following charter school authorized by the New York City Department of Education Chancellor pursuant to Article 56 of the Education Law (the New York Charter Schools Act):

Metropolitan Lighthouse Charter School (Revisions reflect the dissolution of the relationship with the Charter Management Organization (CMO) Lighthouse Academies, Inc.; a change of the school name to “Nuasin Next Generation Charter School;” and an amendment to the school’s organizational chart to add an Executive Director position.)

Reason(s) for Consideration

Required by State statute.

Proposed Handling

This issue will come before the P-12 Education Committee and the Full Board for action at its May 2021 meeting.

Procedural History

The New York City Department of Education Chancellor made the revision recommendation being presented to the Board of Regents for approval and issuance as required by Article 56 of the Education Law.

Background Information

The New York City Department of Education Chancellor and Board of Regents are bound by Article 56 of the Education Law regarding the criteria that can be considered in decision making pertaining to charter school renewals and revisions.

Related Regents Items

Metropolitan Lighthouse Charter School

September 2009 [Initial Charter](#)

(<https://www.regents.nysed.gov/meetings/2009/2009-09-7>)

May 2014 [First Renewal](#)

(<https://www.regents.nysed.gov/common/regents/files/514p12a4.pdf>)

March 2019 [Second Renewal](#)

(<https://www.regents.nysed.gov/common/regents/files/419p12a4.pdf>)

Recommendations

It is recommended that the Board of Regents take the following action:

VOTED: That the Board of Regents finds that the **Metropolitan Lighthouse Charter School**: (1) meets the requirements set out in Article 56 of the Education Law, and all other applicable laws, rules and regulations; (2) the applicant can demonstrate the ability to operate the school in an educationally and fiscally sound manner; (3) granting the request to amend the charter is likely to improve student learning and achievement and materially further the purposes set out in subdivision two of Section twenty-eight hundred fifty of this article; and (4) granting the request to amend the charter would have a significant educational benefit to the students expected to attend the charter school, and the Board of Regents therefore approves the charter revision for **Metropolitan Lighthouse Charter School** and amends the provisional charter accordingly.

Timetable for Implementation

The Regents action for the above-named charter school will become effective on July 1, 2021.

Metropolitan Lighthouse Charter School

Charter School Summary

Name of Charter School	Metropolitan Lighthouse Charter School
Board Chair	Aaron Bothner
District of Location	NYC CSD 9
Initial Commencement of Instruction	Fall 2010
Charter Term(s)	September 15, 2009 – September 14, 2014 September 15, 2014 – June 30, 2019 July 1, 2019 – June 30, 2022
Current Term Authorized Grades / Authorized Enrollment	K – Grade 12 /676 Students
Comprehensive Management Service Provider	Lighthouse Academies, Inc.
Facilities	180 West 165 th St, Bronx, NY 10452 – Private Space
Mission Statement	<i>At Lighthouse Academies, we prepare our scholars through rigorous programs that provide them with a foundation that will allow them to succeed in and graduate from college. Our unique arts infused curriculum, emphasis on social development, and integration of diverse cultural opportunities augments learning and broadens horizons</i>
Key Design Elements	<ul style="list-style-type: none"> • More time for learning • Rigorous, standards-based curriculum • Data Driven Instruction for all • Empowering Hearts and Minds • Restorative Practices • Arts Infusion • Parental and Community Partnership
Requested Revisions	The dissolution of the relationship with the Charter Management Organization (CMO) Lighthouse Academies, Inc.; a change of the school name to “Nuasin Next Generation Charter School;” and an amendment to the school’s organizational chart to add an Executive Director position.

The requested revisions will have no bearing on the number of students being served by this charter school, which will not change, nor will the revisions impact the number of charters available for issuance in New York City or the State. The school, in its eleventh year of operation, has built robust internal capacity to efficiently manage academics, operations, and finance functions. The proposed revisions will ensure that the local leadership and local board are able to rapidly respond to the needs of the school community and allocate more resources toward the academic program.

The Board of Regents granted an initial charter to Metropolitan Lighthouse Charter School in September 2009. Metropolitan Lighthouse commenced instruction in September 2009, initially serving 138 students in K through Grade 2. Metropolitan Lighthouse Charter School’s charter was subsequently renewed by the Board of Regents in 2014 and 2019.

The charter school’s Board of Trustees requests that the Board of Regents approve a material revision to the school’s charter to reflect that the charter school is ending its relationship with Lighthouse Academies, Inc., and will transition all applicable responsibilities to the charter school Board of Trustees and staff. The charter school also requests to change its name to Nuasin Next Generation Charter School and amend its organizational chart.

Additional Context on Name Change and Meaning:

Soon after announcing the planned separation from Lighthouse Academies, Inc., the school leadership team invited members of the community to engage in a re-naming activity to choose a new name. Each grade produced an entry, and the school community (including students, staff, and families) voted for their favorite name in a Google poll. The Board then approved a final name, Nuasin Next Generation Charter School, which was a combination of two of the most-voted for entries. The word Nuasin comes from Native Americans who lived in the area where the school is located today. They called it “Nuasin,” which means “the land between.” As per the New York City Parks Department, “the moniker referred to the land’s position between the Harlem River and an estuary that flowed where Jerome Avenue is today.” Next Generation reflects the future promise of the school’s scholars.

Table 1: Current Grade Levels and Authorized Enrollment

	Year 1 2019 to 2020	Year 2 2020 to 2021	Year 3 2021 to 2022
Grade Configuration	K – Grade 11	K – Grade 12	K – Grade 12
Total Authorized Enrollment	624	676	676

Figure 1: Elementary/Middle School Assessment Proficiency State and District Differentials Over Time Comparison to NYC CSD 9

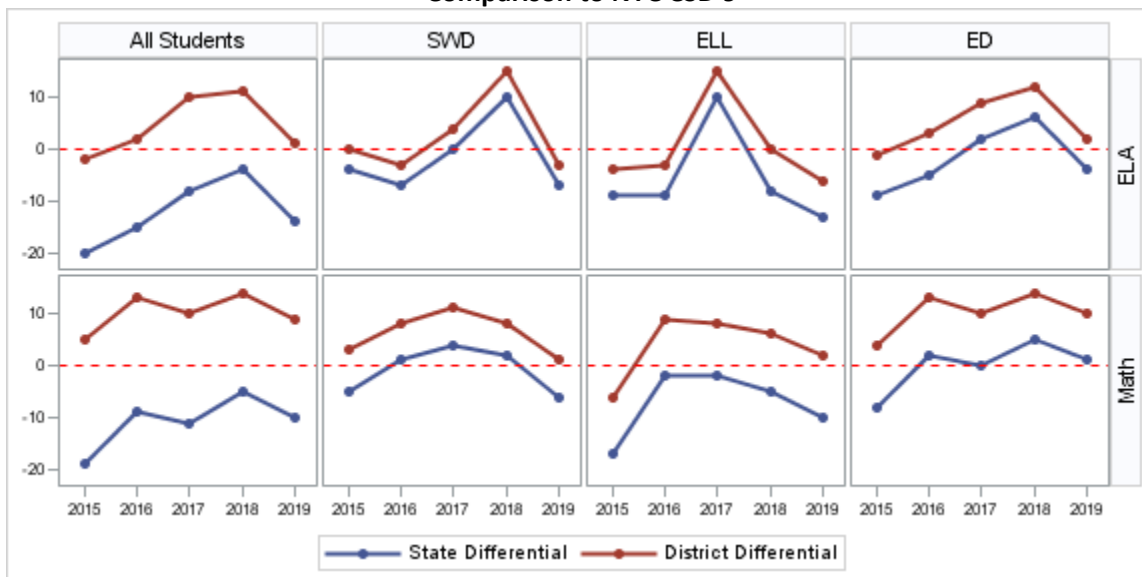


Table 2: Elementary/Middle School Assessment Proficiency Outcomes: Charter School, District & NYS

		ELA					Math				
		Metropolitan Lighthouse CS	NYC CSD 9	Differential to District	NYS	Differential to NYS	Metropolitan Lighthouse CS	NYC CSD 9	Differential to District	NYS	Differential to NYS
All Students	2014-2015	11%	13%	-2	31%	-20	23%	18%	+5	42%	-19
	2015-2016	22%	20%	+2	37%	-15	32%	19%	+13	41%	-9
	2016-2017	32%	22%	+10	40%	-8	29%	19%	+10	40%	-11
	2017-2018	41%	30%	+11	45%	-4	40%	26%	+14	45%	-5
	2018-2019	31%	30%	+1	45%	-14	37%	28%	+9	47%	-10
SWD	2014-2015	3%	3%	0	7%	-4	9%	6%	+3	14%	-5
	2015-2016	2%	5%	-3	9%	-7	14%	6%	+8	13%	+1
	2016-2017	11%	7%	+4	11%	0	18%	7%	+11	14%	+4
	2017-2018	26%	11%	+15	16%	+10	19%	11%	+8	17%	+2
	2018-2019	8%	11%	-3	15%	-7	11%	10%	+1	17%	-6
ELL/MLL	2014-2015	3%	7%	-4	12%	-9	5%	11%	-6	22%	-17
	2015-2016	5%	8%	-3	14%	-9	19%	10%	+9	21%	-2
	2016-2017	22%	7%	+15	12%	+10	17%	9%	+8	19%	-2
	2017-2018	17%	17%	0	25%	-8	24%	18%	+6	29%	-5
	2018-2019	12%	18%	-6	25%	-13	21%	19%	+2	31%	-10
ED	2014-2015	12%	13%	-1	21%	-9	22%	18%	+4	30%	-8
	2015-2016	22%	19%	+3	27%	-5	32%	19%	+13	30%	+2
	2016-2017	31%	22%	+9	29%	+2	29%	19%	+10	29%	0
	2017-2018	41%	29%	+12	35%	+6	39%	25%	+14	34%	+5
	2018-2019	32%	30%	+2	36%	-4	37%	27%	+10	36%	+1

Table 3: Subgroup Enrollment: Students with Disabilities, ELLs, and Economically Disadvantaged

	SWD			ELL			ED		
	Metropolitan Lighthouse CS	NYC CSD 9	Differential to District	Metropolitan Lighthouse CS	NYC CSD 9	Differential to District	Metropolitan Lighthouse CS	NYC CSD 9	Differential to District
2015-2016	14%	24%	-10	17%	29%	-12	92%	92%	0
2016-2017	12%	24%	-12	17%	27%	-10	91%	91%	0
2017-2018	12%	25%	-13	19%	30%	-11	92%	94%	-2
2018-2019	12%	25%	-13	20%	30%	-10	92%	93%	-1
2019-2020	12%	25%	-13	21%	30%	-9	94%	94%	0

Table 4: Aggregate and Subgroup Retention

	All Students			SWD			ELL			ED		
	Metropolitan Lighthouse CS	NYC CSD 9	Differential to District	Metropolitan Lighthouse CS	NYC CSD 9	Differential to District	Metropolitan Lighthouse CS	NYC CSD 9	Differential to District	Metropolitan Lighthouse CS	NYC CSD 9	Differential to District
2015-2016	92%	83%	+9	94%	83%	+11	96%	86%	+10	91%	83%	+8
2016-2017	94%	83%	+11	88%	82%	+6	90%	86%	+4	94%	84%	+10
2017-2018	82%	79%	+3	83%	80%	+3	85%	80%	+5	82%	79%	+3
2018-2019	83%	78%	+5	78%	77%	+1	85%	79%	+6	83%	78%	+5
2019-2020	89%	78%	+11	90%	78%	+12	90%	80%	+10	88%	78%	+10

Table 5: Aggregate Enrollment: Reported vs Contracted – Target = 100%

Metropolitan Lighthouse CS	Contracted Enrollment	Reported Enrollment	Percent of Contracted Enrollment
2015-2016	368	428	116%
2016-2017	414	474	114%
2017-2018	460	525	114%
2018-2019	506	606	120%
2019-2020	624	629	101%

Summary of Public Comment

The required public hearing was held by the New York City Department of Education on March 4, 2021. Thirteen people attended, and four spoke. Four were in favor of the revision. None were opposed.