

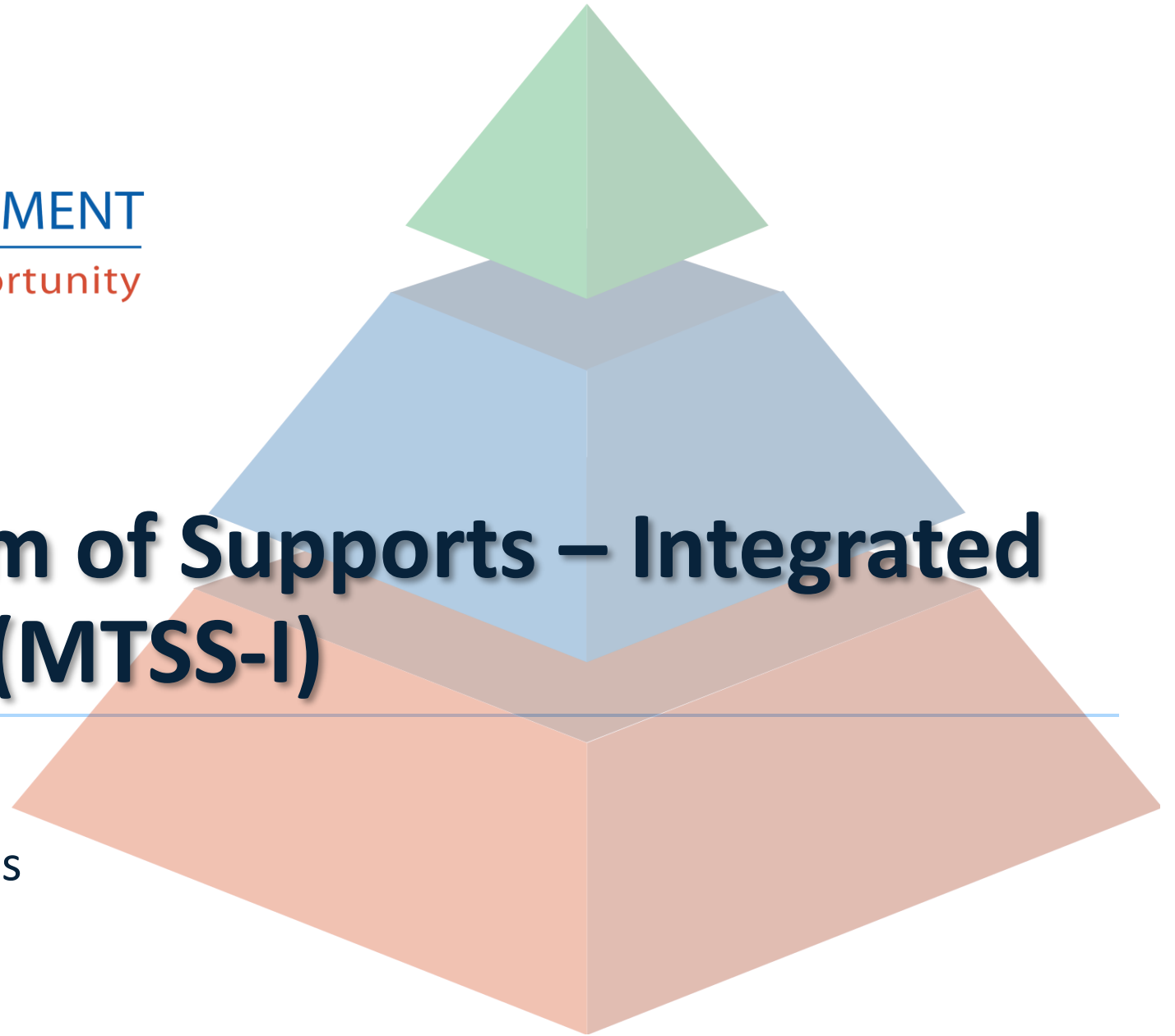


New York State  
EDUCATION DEPARTMENT  
Knowledge > Skill > Opportunity

# Multi-Tiered System of Supports – Integrated (MTSS-I)

Presentation to the Board of Regents

January 9, 2023



# Agenda

01

MTSS  
An Introduction

02

MTSS-I  
Understanding the I in MTSS-I

03

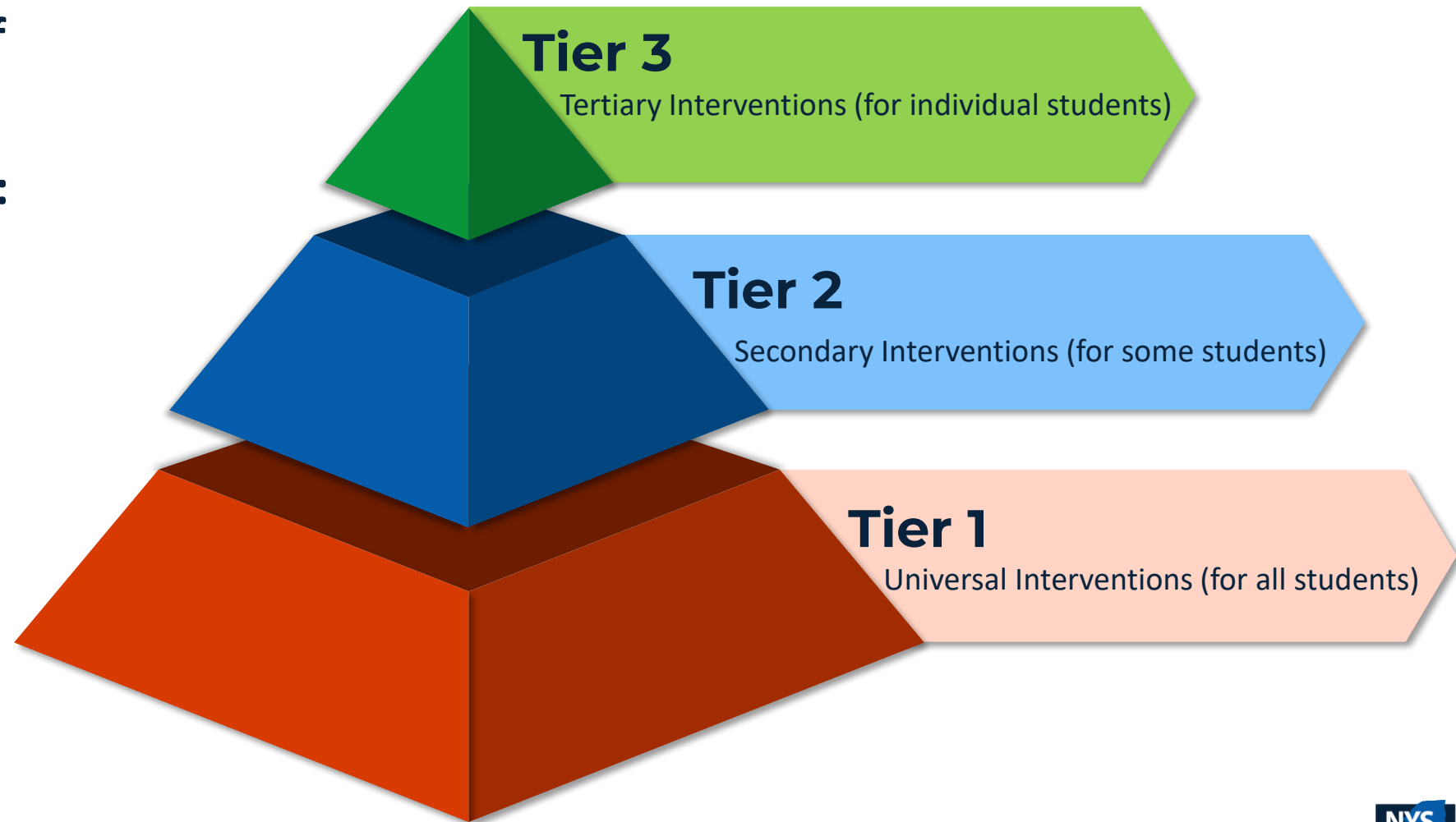
MTSS-I Center  
Staff, Vision, Districts

04

Closure  
Questions and Answers

## Multi-Tiered System of Supports (MTSS) is a data-driven decision-making framework for:

- Increasing the **effectiveness, efficiency, and equity** of delivered instruction;
- Rapidly identifying and responding to the needs of students;
- Continuously improving; and
- Implementing evidence/research-based practice.



# NYSED's MTSS-I Pilot

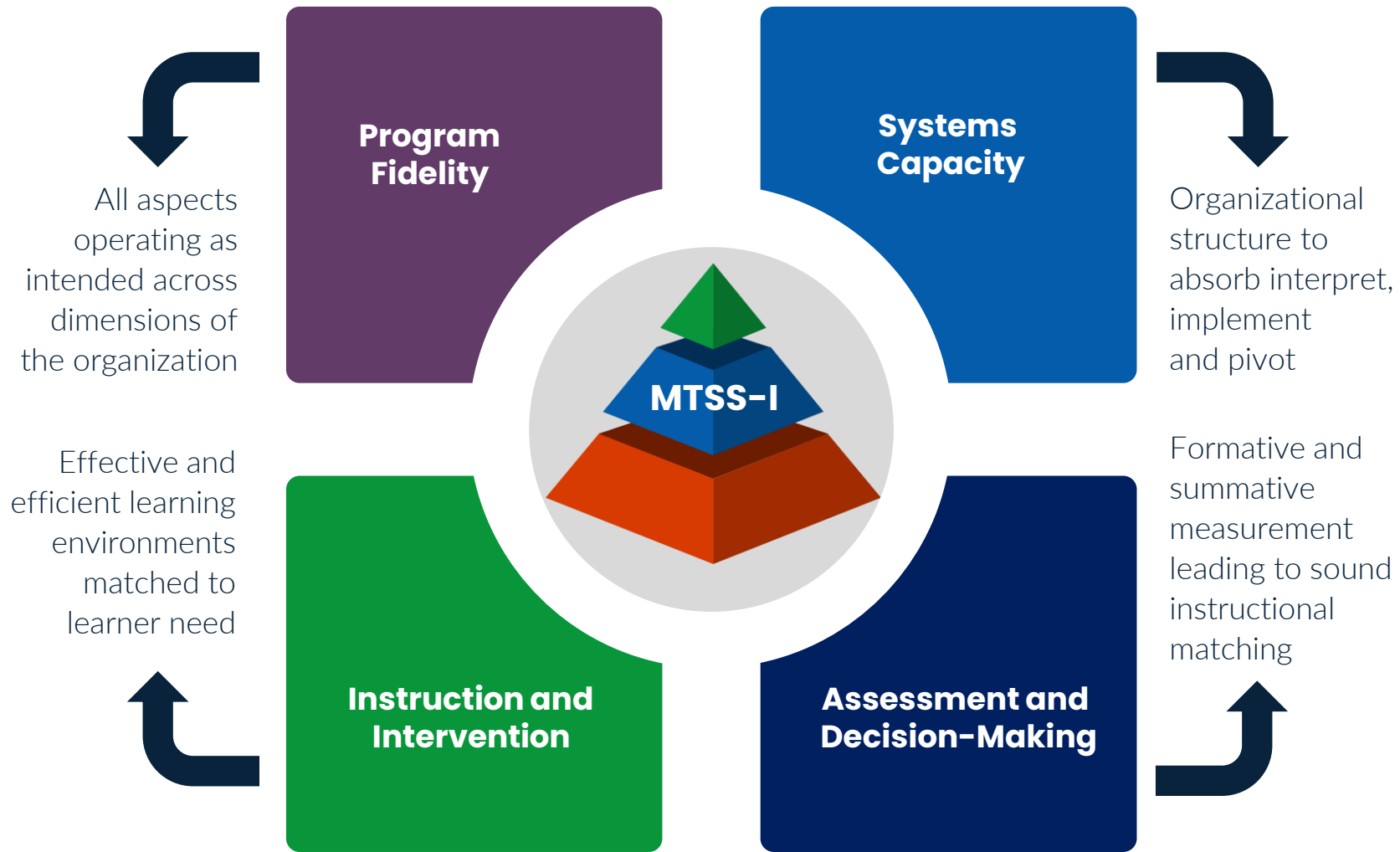
Let's talk about the "I" in MTSS-I...



# NYSED's MTSS-I Pilot Framework

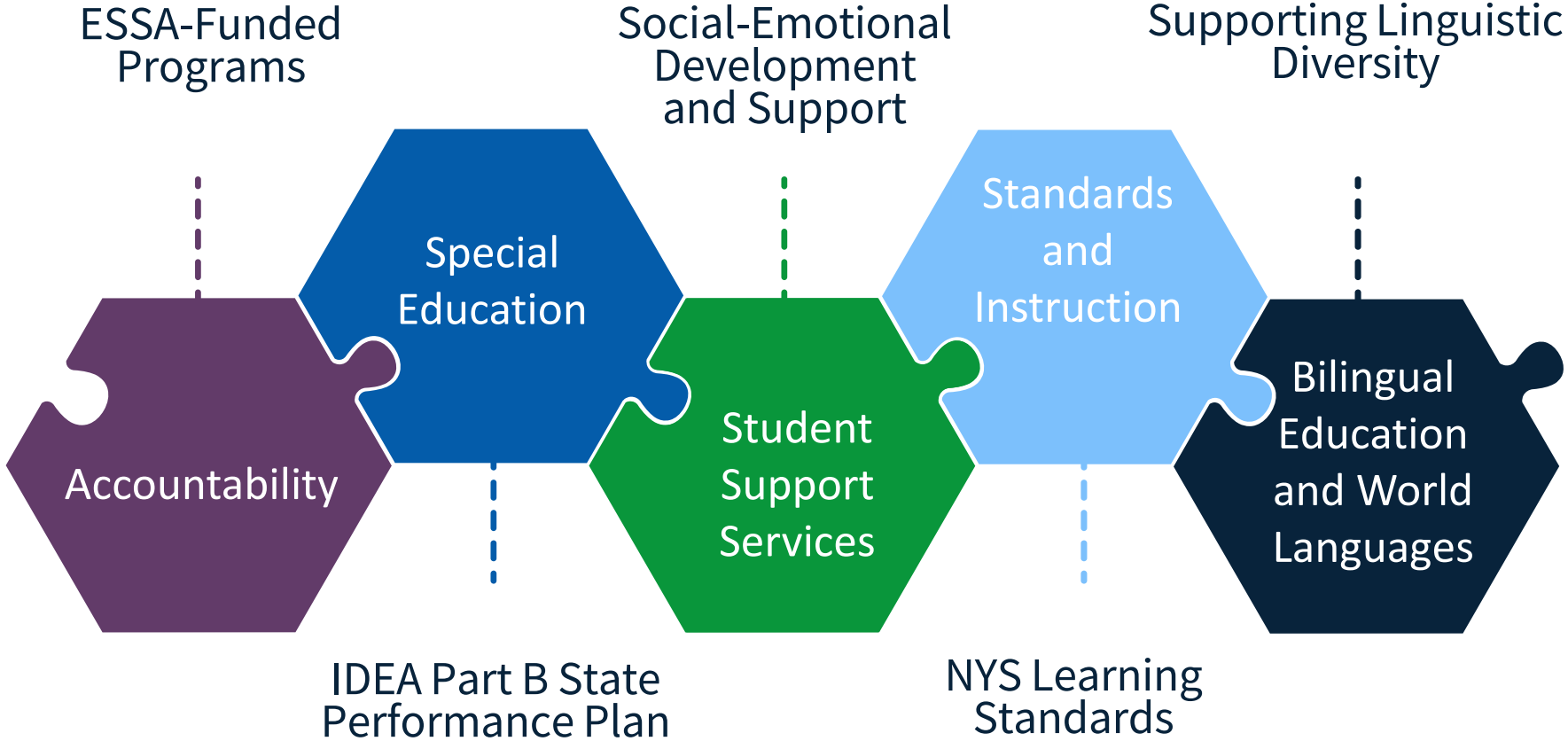
- Holistic approach to identifying and addressing students' unique needs
- Responsive to every student's social identity, culture, and language
- Adopts fairness and equity as core principles to drive access to opportunity
- Ensures an unwavering focus on supporting the academic, behavioral, and social emotional growth of every student across New York State





# MTSS-I Pilot Framework

# NYSED Offices Supporting the MTSS-I Pilot



# MTSS-I Center - Mission

- Improve outcomes for all students.
- Build capacity in districts to deliver evidence-based practices.
- Empower stakeholders.





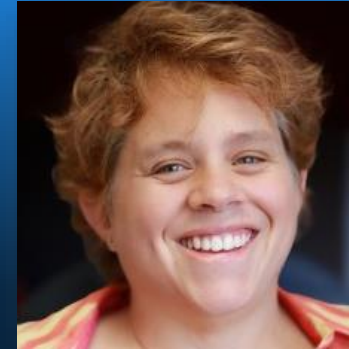
# Our Team Providing MTSS-I Supports



Kevin Quinn, PhD  
Principal Investigator  
University at Albany



Stacy Williams, PhD  
MTSS-I Director



Renee Beaulieu  
MTSS-I Coach  
RLTs 4, 11



Rodrigo Campos, PsyD  
MTSS-I Coach  
RLTs 1, 12

Professional Development

Technical Assistance

Coaching



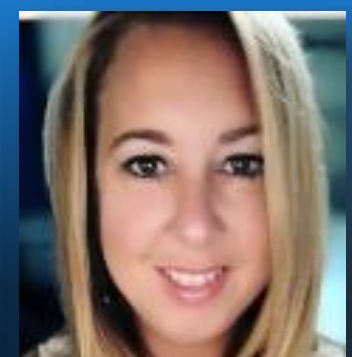
Steve Rappleyea, PsyD  
MTSS-I Coach  
RLTs 2, 3, 4



Meredith Rivet  
MTSS-I Coach  
RLTs 4,5,9,10,11



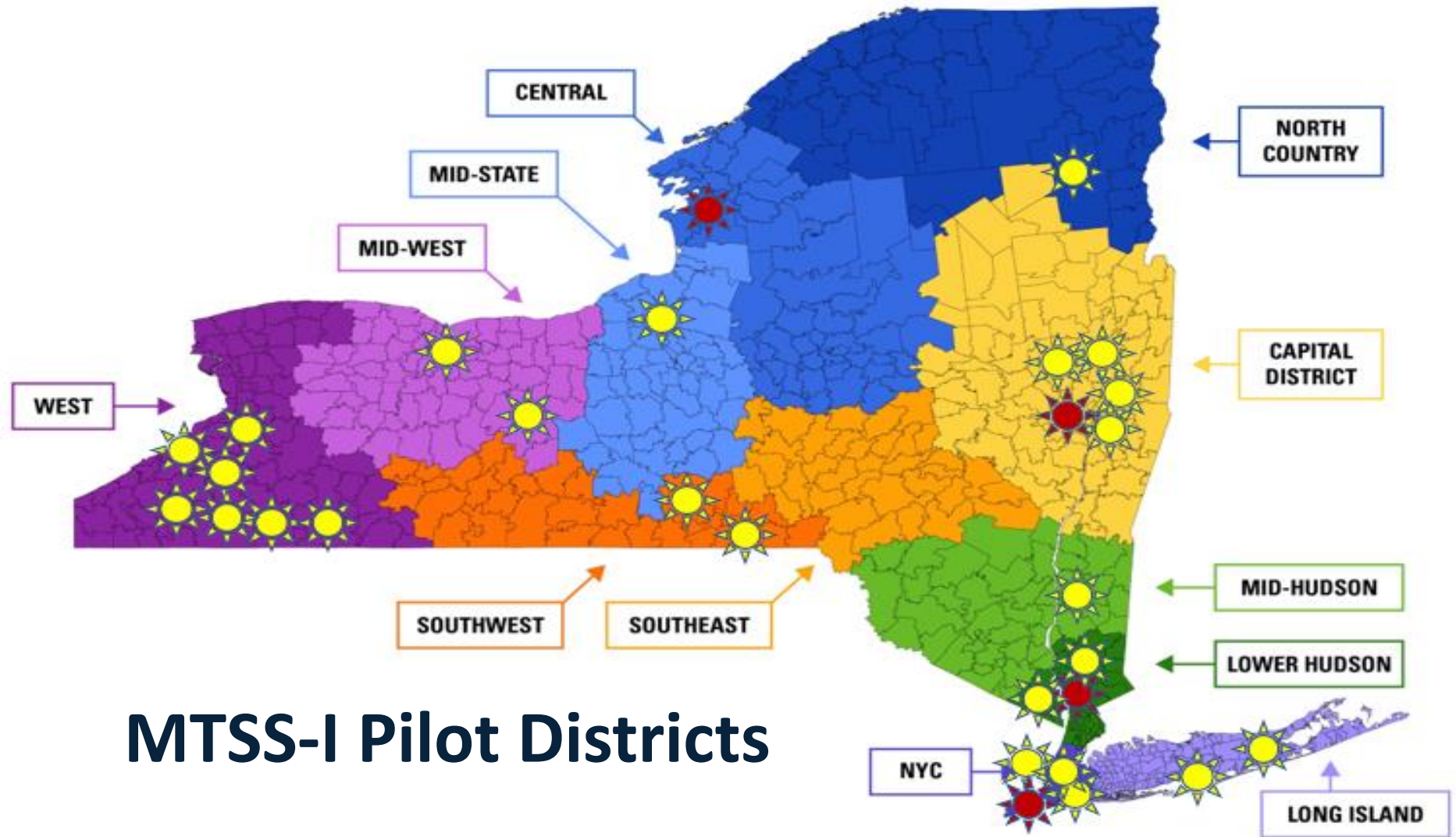
Daniel Carroll  
MTSS-I Coach  
RLTs 7, 8, 9, 10, 11



Tina Minehan  
NYS ED Project  
Manager

### SPDG Districts

- Binghamton CSD
- Carmel CSD
- Cazenovia CSD
- East Ramapo CSD
- Moriah CSD
- District # 31 Staten Island**
- District #8 Bronx
- Olean CSD
- Peekskill CSD**
- Poughkeepsie CSD
- Randolph CSD
- Riverhead CSD
- Schenectady CSD**
- Troy CSD
- Watertown CSD**
- Allegany-Limestone CSD
- Averill Park CSD
- Brocton CSD
- Fulton CSD
- Gloversville CSD
- Jamestown CSD
- Lackawanna CSD
- District #30 Queens
- District #5 Manhattan
- Pine Valley CSD
- Queensbury UFSD
- Rochester CSD
- Spencer Van-Etten UFSD
- West Islip UFSD



## MTSS-I Pilot Districts



**Darlyne  
A'Degramont  
Director of  
Special Education**

**Dr. Rebecca Devries-Palmer  
Director of School  
Counseling**

**Erika MacFarlane  
Director of Student  
Intervention Services**

**Stacey Eger-Converse  
Assistant Superintendent  
of Instruction**

**Dr. David Mauricio  
Superintendent of  
Schools**

**NYC District 31  
Staten Island**

**Schenectady City School District**

**Watertown City  
School District**

**Peekskill  
City School District**

# Guest Presenters



# Questions and Answers

---



# Thank You

